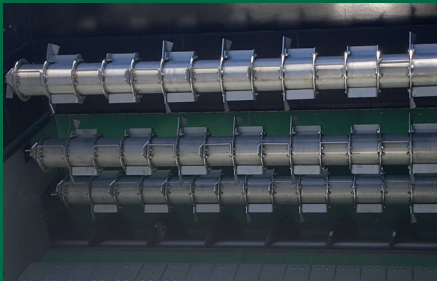
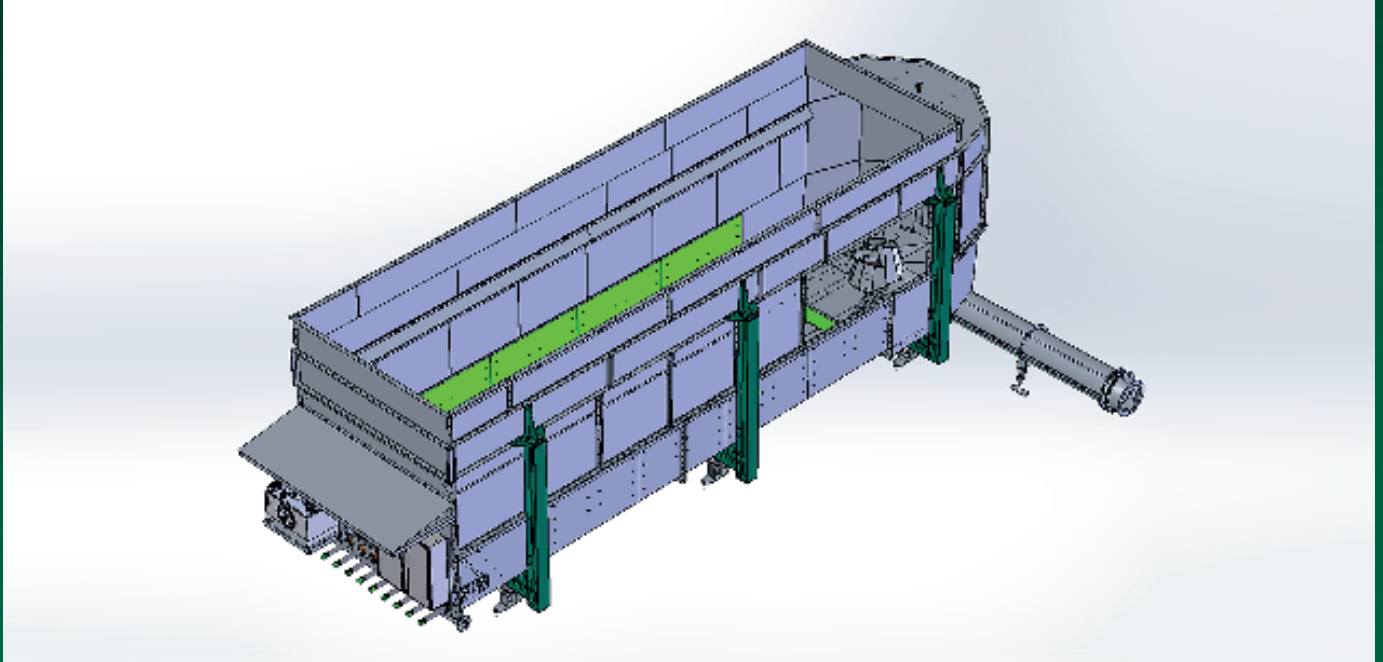
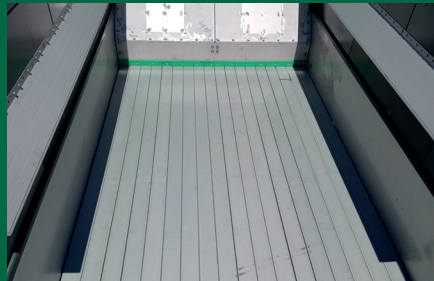


SCFE – Solids dosing system

Reliable dosing technology for fibrous input substrates



Alternatively: Break-up by rollers with tools instead of a mixing star



Surfaces in contact with substrate made of stainless steel or with plastic cladding



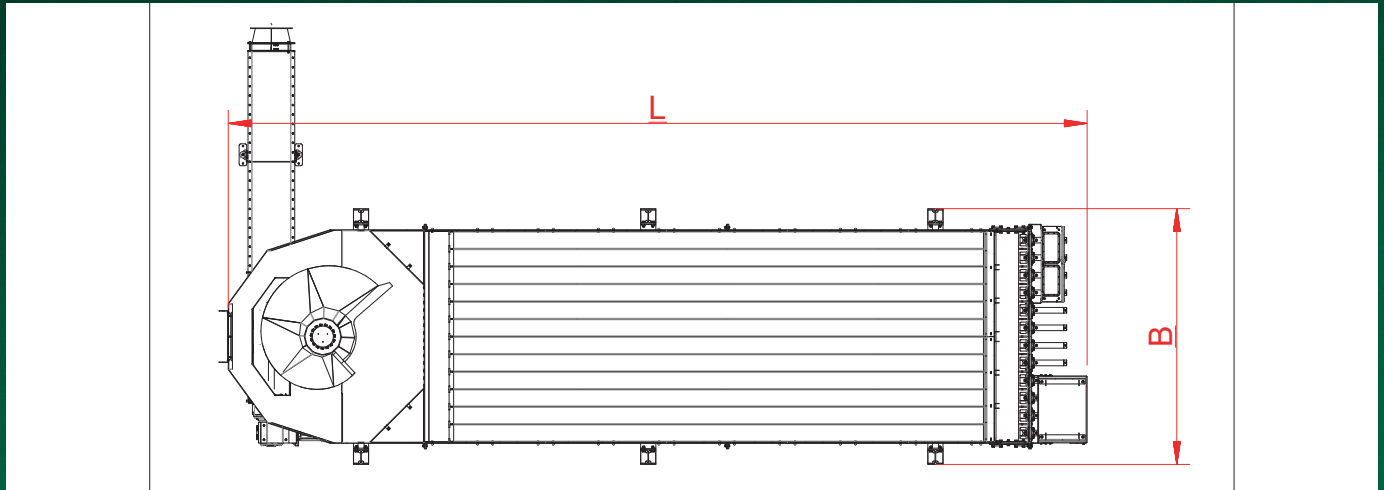
Speedfloor especially for fibrous substrates with lower bulk densities

Hydraulically driven push bars are arranged in the bottom of the dosing device and feed the substrates to a processing zone. The substrates are broken up by a mixing star or, alternatively, by rollers equipped with tools, and discharged via a spiral conveyor. Alternatively, the dosing device can be equipped with a weighing device.

The SCFE complements the familiar model ranges of HUNING solids dosing devices and can therefore also be modularly combined with all conveying and shredding systems in our range. Further conveying can take place via spiral conveyors, pumps or other conveying technology. In combination with our shredding systems, especially our impact shredders or optimised hammer mills, we are thus able to realise highly efficient processing systems for a wide range of biomasses from a single source.

SCFE – Solids dosing system

Reliable dosing technology for fibrous input substrates



Type	Volume	Length	Width	Height	Mixers Ø	Discharge screw	Hydraulics
SCFE-M	80 m ³	11,8 m	3,4 m	4,0 m	ca. 2,4 m/ 22 KW	SP -460/5,5 KW	7,5 KW
SCFE-M	90 m ³	11,8 m	3,4 m	4,4 m	ca. 2,4 m/ 22 KW	SP -460/5,5 KW	7,5 KW
SCFE-M	100 m ³	13,8 m	3,4 m	4,0 m	ca. 2,4 m/ 22 KW	SP -460/5,5 KW	7,5 KW
SCFE-M	110 m ³	13,8 m	3,4 m	4,4 m	ca. 2,4 m/ 22 KW	SP -460/5,5 KW	7,5 KW
SCFE-M	120 m ³	13,8 m	3,4 m	4,8 m	ca. 2,4 m/ 22 KW	SP -460/5,5 KW	7,5 KW

Other sizes possible due to flexible design of the attachments.

With approx. 400 employees, the HUNING Group is strongly rooted in agriculture. At the main production site in Melle (Germany), the group has modern production facilities on a manufacturing area of 12,000 m². A wide range of different systems for processing and feeding solids into biogas plants has been produced here in series at a high level of quality for approx. 20 years.

Besides machine and plant construction, the group operates its own biogas plants and agricultural operations. Our experience as users is constantly incorporated into the development of our machines and plants.

More than 2,500 solids dosing systems implemented worldwide speak for our expertise and reliability.



**A HUNING GROUP
COMPANY**

HUNING Anlagenbau GmbH & Co. KG • Wellingholzhausener Straße 6 • D – 49324 Melle
Phone: +49 (0) 54 22/6 08-2 00 • Fax: +49 (0) 54 22/6 08-2 31
info@huning-anlagenbau.de • www.huning-anlagenbau.de